

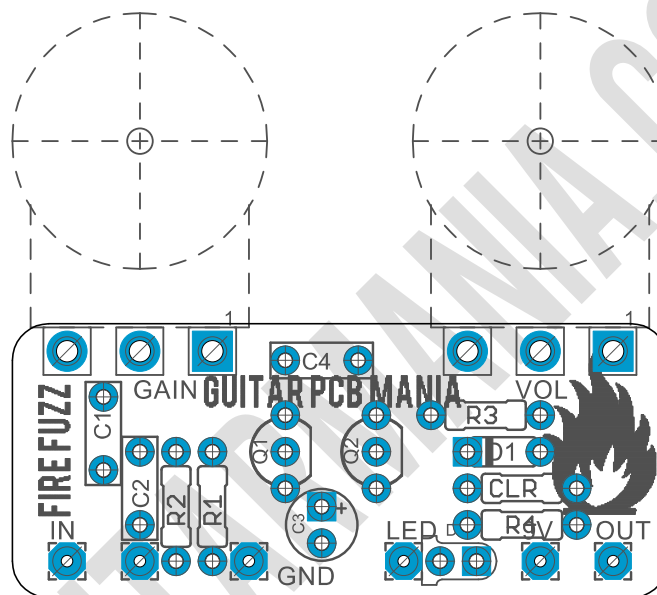
# Fire Fuzz

*Based EQD's Bellows.*

*Fuzz*

*By PCB Guitar mania Mania*

[Project link](#)



The Fire Fuzz is in between amp-like grit and fuzzy saturation. It starts with subtle amp-like breakup, and ends at full-on raging fuzz. In between you'll find an array of useful overdrive and distortion tones.

- Ready to be wired as True Bypass.
- Tight design to fit in a 1590B Enclosure with pots and switches on board.

## BOM

### Resistors

R1	10k
R2	10k
R3	22k
R4	200r
CLR	2K7-4K7

### Capacitors

C1	22n
C2	1n
C3	100u electro
C4	68n

### Pots

VOL	100k B
GAIN	250k B

### Transistors

Q1	PF5102
Q2	MPSA13

### Diodes

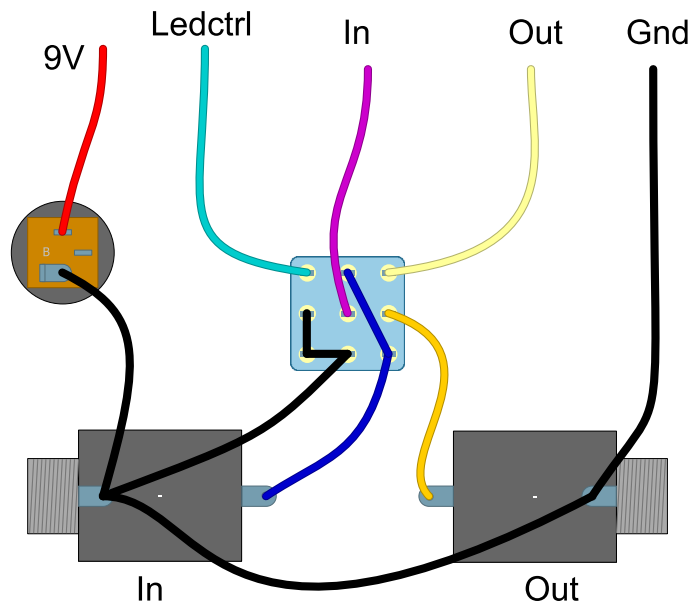
D1	1n4001
D2	LED3MM

## General Building notes

To populate the PCB it's recommended to follow this order.

1. Resistors & diodes
2. IC Sockets (set up the proper IC at last)
3. Capacitors, starting with the smaller ones and the ceramic ones.
4. Electrolytic capacitors (always check the polarity)
5. Transistors
6. Wires
7. Potentiometers
8. Off board wiring

## Off Board Wiring



## Drilling the enclosure

This Project has been planned to fit into a 1590B enclosure type (112x60x31mm)

Check the Attached “Drilling templates” to drill the box properly. The files are on Scale 1:1, ready to print in a A4 page.

## Schematic

