

My Bloody Pumpkin Blender SMD

Based on:

Fender Blender

Effect type:

Old-school style fuzz

Build difficult:

Easy

Amount of parts:

Low, total 26 components

Technology:

NPN Silicon transistors

Power consumption:

9V

Enclosure type:

125b

Get your board at:

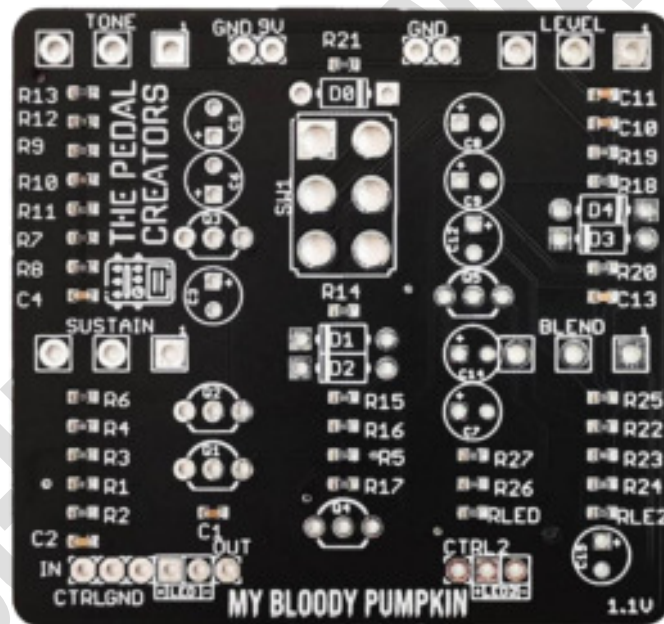
[My Bloody Pumpkin Blender SMD](#)

Get your kit at:

[Das Musikding \(Europe\)](#)

Project overview:

Inspired by Fender Blender. One of the best-sounding old-school style fuzz out there. Don't miss this germanium-based fuzz box that produces pretty vintage sounds that are utterly feral at the same time.



About The Pedal Creators

Everyone can build excellent boutique guitar **pedals**.

Everything **we do** is to make that **experience** more accessible and **user-friendlier**.

The **Pedal Creators** series are the **best and easiest to build PCBs** ever. Including most **resistors** and **capacitors** already **soldered** on board as SMD components, leaving the key values for you to **experiment** and craft **your own tone**.

Now you can **build** a pedal you are **proud** of in **less than an hour** without any previous experience.

What are you waiting for to **become a Pedal Creator**?

The Pedal creators - key features:

- **Easy to build**, no previous experience required. It's like Lego for musicians.
- **Fast assembly** finish a pedal in less than an hour. Play your favorite record and enjoy the ride along.
- **100% mistake-proof**. Even my grandma can build one while she cooks.
- **Build** your own boutique pedal. Experiment with different values and make the **pedal you always dreamed of**.
- Easy to scale. **Turn your passion into a money-making machine**.

Index

1. Project overview
2. About The Pedal Creators
3. Index, Introduction & Controls
4. Bill of materials
5. Shopping list
6. Schematics
7. Components recommendations, Build Notes, Wiring Diagram
8. Drilling Template, Licensing and Usage

Introduction

When Fender released their Fender Blender in 1968, it seemed like they were entering late in the game. The war of fuzz pedals had already begun in '62, and after all, what could they bring to the table? The fuzz fiver that started with the Maestro FZ-1 Fuzz-Tone by Gibson rose through the '60s and brought numerous incarnations of Fuzz Face, Tonebenders, Shin-ei / Univox Superfuzzes, Mosrite Fuzzrite, and a big etcetera.

It seemed that it was pretty late to release a game-changing fuzz pedal...but history has many plot twists. If Fender was a latecomer to the scene, it had to offer a really good fuzz. And it did it with its impressive octave blend that delivered a total new tonal option!

The rest is well known; bands like My Bloody Valentine and The Smashing Pumpkins popularized the board and his unique sound.

We recreated this historical pedal with all modernizations up to date. The topology is pretty darn close to the Superfuzz, including Germanium diodes, Transistor splitter, and switchable tone control. It sounds awesomely bass-heavy, and we really dig its low end. If you're not a fan of this, switch the tone control on and get new tonal options.

Become part of history and try this old-school, hard-to-find fuzz that will never go out of style.

Controls

- BLEND
- LEVEL
- SUSTAIN
- TONE

Bill of materials

Electrolytics Capacitors	
Part	Value
C3	10u
C5	10u
C6	10u
C7	10u
C8	10u
C9	10u
C12	10u
C14	10u
C15	10u

Potentiometers	
Part	Value
BLEND	100K B
LEVEL	50K A
SUSTAIN	10K A
TONE	25K B

Transistors	
Part	Value
Q1	2N5088
Q2	2N5088
Q3	2N5088
Q4	2N5088
Q5	2N5088

Switches	
Part	Value
SW1	ON-ON

Diodes	
Part	Value
D0	1n5817
D1	1n34a
D2	1n34a
D3	1n34a
D4	1n34a
LED	3mm LED
LED2	3mm LED

Shopping list

Electrolytics Capacitors

Qty	Value	Parts
9	10u	C3, C5, C6, C7, C8, C9, C12, C14, C15

Potentiometers

Qty	Value	Parts
1	10K A	SUSTAIN
1	100K B	BLEND
1	25K B	TONE
1	50K A	LEVEL

Transistors

Qty	Value	Parts
5	2N5088	Q1, Q2, Q3, Q4, Q5

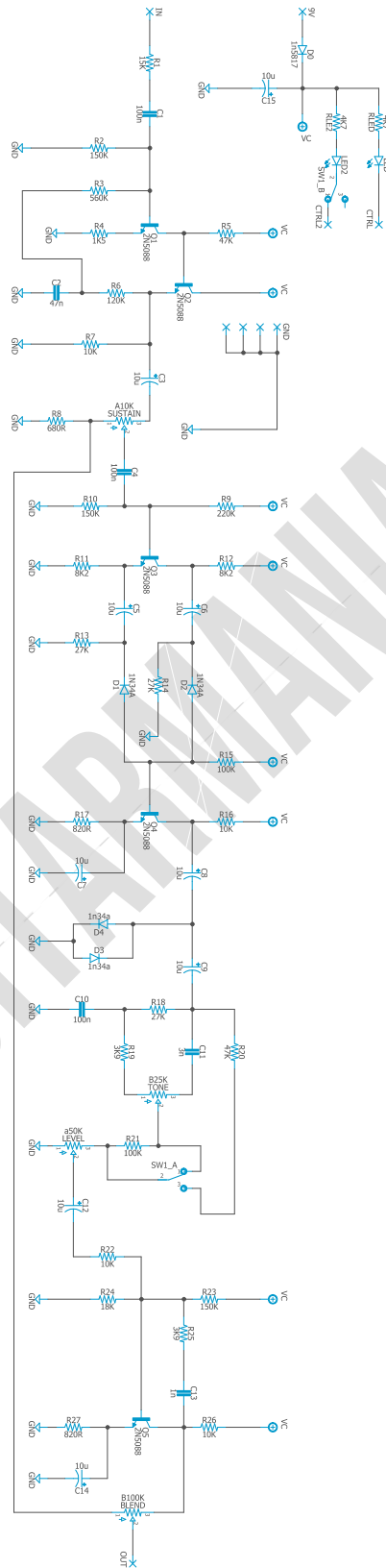
Switches

Qty	Value	Parts
1	ON-ON	SW1

Diodes

Qty	Value	Parts
2	1N34A	D1, D2
2	1n34a	D3, D4
1	1n5817	D0
2	3mm red LED	LED, LED2

Schematic



Components Recommendations

As many people like to experiment with some pedals with higher voltage, always ensure your **electrolytic capacitors'** max tolerance is over 25v.

This board has been tested using Film box capacitors for most of the values over 1nf and ceramics discs for those under 1nf. However, high-quality components such as Wima's Capacitors and Panasonic's electrolytics can deliver a better performance.

All the resistors used for testing this project are 1/4W Metal Film.

The BOM and Shopping list are exclusive regarding this project. It doesn't include all the hardware like the 3PDT bypass switch, audio/dc jacks, enclosure, etc.

Build Notes

If this is one of your first projects, I recommend you to take a look at our [Pedal Building Guide](#).

For a successful and tidy build, it's recommended the following order:

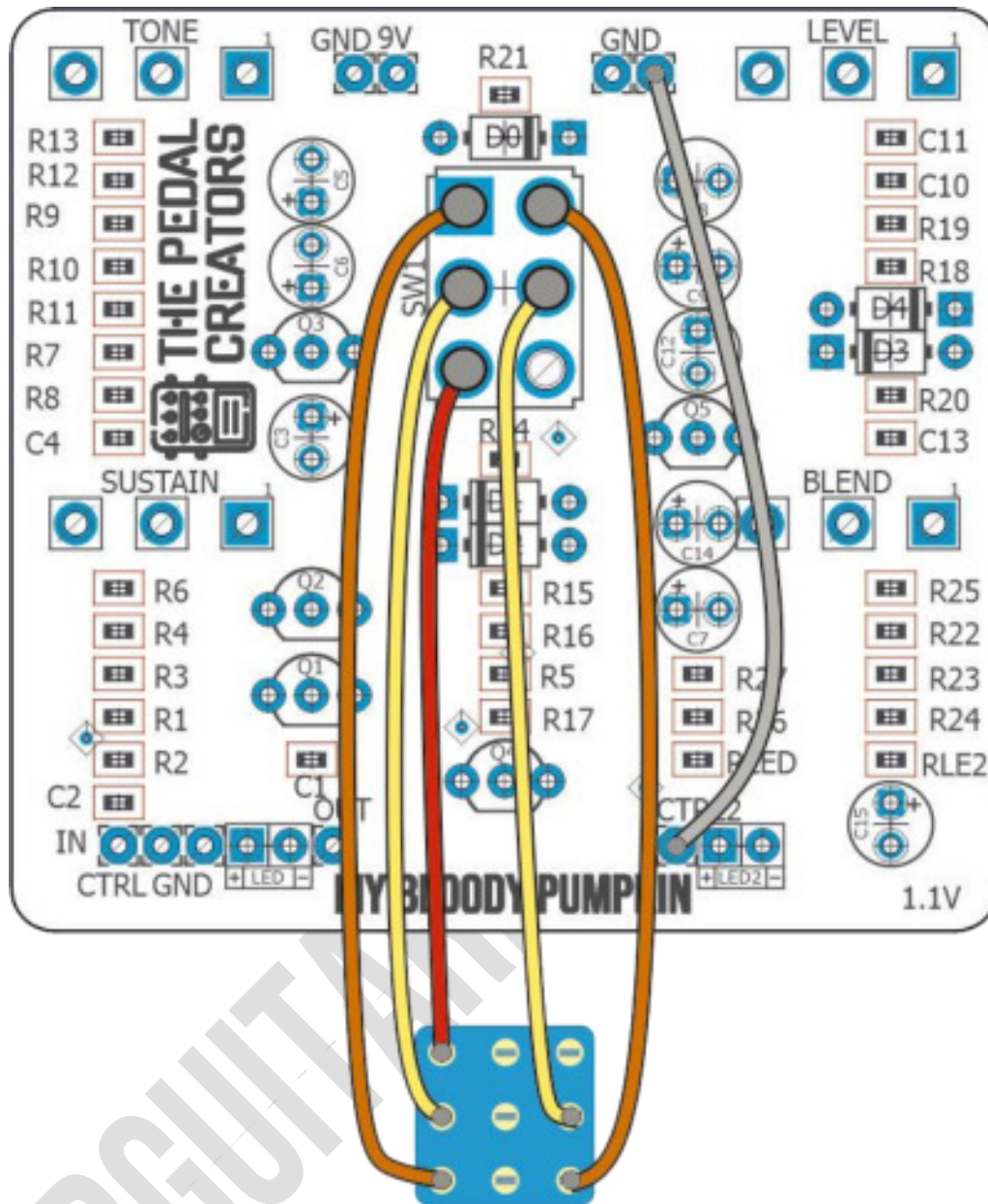
1. Electrolytic capacitors (always check the polarity)
2. Transistors
3. Wires
4. Potentiometers and switches
5. Off-board wiring

Wiring Diagram

All our projects include a free 3PDT Board to make the wiring easier and tidier. Also, all of our PCBs feature the status LED on board.

The pad named "Ctrl" or "LED" is the one that controls the status of the led; wire it to the "LED" pad on the 3PDT board or in the control slug of your 3PDT.

This board has been designed to match our EZ 3PDT PCB; check it [here](#) to access our [Pedal Wiring Guide](#).



Drill Template

This Project has been planned to fit into a 125b enclosure type.

Check the Attached "Drilling templates" to drill the box properly. The files are on Scale 1:1, ready to print on an A4 page.

Licensing and Usage

We really appreciate your trust and support in buying this PCB, as well as your will to dive into the DIY electronics world. For us, that's why you can make this project work properly and enjoy not only the building process but also experiment and play with it on your rig.

We try to reply to every question we receive on our email or our social media. Still, we try to encourage all our customers to join our [PCB Guitar Mania - Builders Group](#) on Facebook to post all your doubts, issues, suggestions, or requests, share your builds, and have some feedback from other fellow builders and us!

We tested all our projects following this same guide on their standard configurations. Although, not all of the variations and mods have necessarily been checked. These are suggestions based on the schematic analysis and the experiences and opinions of others. Feel free to share with us your views and recommendations regarding the mods your personal experimentation.

These boards may be used for commercial endeavors in any quantity unless expressly noted. No attribution is necessary, though accreditation or a link back is always much appreciated. If you are a builder planning to make your own run of pedals, we also offer the service of custom-made boards with your brand and logo, design according to your specifications.

The only usage restrictions are that, first, you cannot resell the PCB as part of a kit without prior arrangement with us, and second, you cannot scratch off the silkscreen or other way of trying to hide our logos and the source of the PCBs. Like it's written above, if you want to have your designs with your brand and logo, we could undoubtedly reach an agreement.

Follow us on [Instagram](#) and [Facebook](#) to stay in tune with the latest projects!